

## INTRODUCTION

The Tasmanian Wound Care Association (TWCA) has been active since 1993 and is an incorporated body that is affiliated with the AWMA.

The TWCA's philosophy states that all people with or who are likely to develop a wound are entitled to receive personalised care and management that is supported by current validated research. The TWCA is committed to promoting the education of health professionals in the application of evidence based wound management. An annual seminar is held each year to educate health professionals in all areas of wound management. Commencing 2005, TWCA will be conducting educational meetings in all regions across the state.

The Australian Wound Management Association hold biennial conferences that are rotated around the States.

The Committee of the TWCA welcomes enquiries regarding education sessions and is also available for wound management information.

Annual subscription to TWCA provides you with

- The AWMA Journal Primary Intention, published in Australia. This dynamic journal has articles on current wound management and research.
- Discounted registration at TWCA and AWMA conferences

- Invitation to state-wide education meetings
- Access to members only information exchange
- Voting rights at the AGM of AWMA and TWCA

## MEMBERSHIP TYPES AND DETAILS

### Full Membership \$60.00

Open to all persons with a recognised nursing, medical or allied health qualification, interested in wound management, research or teaching of wound management. Eligible to vote in general, special and extraordinary meetings and also able to hold office.

### Associate Membership \$60.00

Open to all persons who are retired or not actively involved in wound management or who are full-time students and do not have a recognised nursing, medical or allied health qualification. Associate Members are not eligible to hold office or be active members of any committee.

### Corporate Membership \$100.00

Any Corporation whose financial basis stems from manufacture, direct wholesale and distribution of any product that may be used in the management of person with a wound. Corporate Members may not hold office, may not vote and may not be a member of a committee.



# TASMANIAN WOUND CARE ASSOCIATION

**Tasmanian Wound Care Association Inc**

**MEMBERSHIP APPLICATION FORM**

Surname.....

Given Name.....

Address.....

.....

.....Post Code.....

Work Phone.....

E-Mail.....

Occupation.....

Workplace.....

.....

**Membership Type**

**FULL \$60.00 ASSOC. \$60.00 CORP. \$100.00**

Please indicate if you would like to be involved in the TWCA member only "information exchange" administered by the TWCA via our website

Yes  No

If yes, please ensure your e-mail address is listed.

Please complete this form and post with cheque/money order payable to:

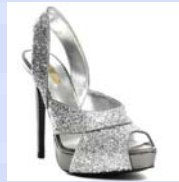
Please make cheques payable to: Tasmanian Wound Care Association Inc GPO Box 1759 HOBART TAS 7001.

**DATES TO REMEMBER**

**Keryl n Carville**

travelling with the TWCA State-wide

*Wound Wagon*



**July 19-23 2010**

Catch the *Wound Wagon* as it travels from Burnie to Hobart via Launceston in October.

Educational events supported by a great trade exhibition

Updates on the website [www.twca.com.au](http://www.twca.com.au)

Website details

Registration forms available [www.twca.com.au](http://www.twca.com.au)

**PAY YOUR MEMBERSHIP RENEWAL BY DIRECT EFT**

**BSB 807 009 Account no. 1211 8692**  
Reference: Your name + 2009 renewal

**Then email, fax or post your completed form to the Membership Secretary**



Tasmanian Wound Care Association  
[www.twca.com.au](http://www.twca.com.au)

*"The Tasmanian Wound Care Association is committed to promoting wound management in the state of Tasmania."*

**Contact Details:**

**PRESIDENT** Juliet Scott [juliet.scott@dhhs.tas.gov.au](mailto:juliet.scott@dhhs.tas.gov.au)

**VICE PRESIDENT** Carol Baines 03 62228322 or 0408992403  
[carol.baines@dhhs.tas.gov.au](mailto:carol.baines@dhhs.tas.gov.au)

**SECRETARY** Helen Strong

**TREASURER** Pip Rice [pip.rice@dhhs.tas.gov.au](mailto:pip.rice@dhhs.tas.gov.au)

**MEMBERSHIP SECRETARY** Bebe Brown 03 62 228322  
[bebe.brown@dhhs.tas.gov.au](mailto:bebe.brown@dhhs.tas.gov.au) Fax 03 6222 7268

**WEB MISTRESS** Clarissa Young 03 63 487320  
[clarissa.young@dhhs.tas.gov.au](mailto:clarissa.young@dhhs.tas.gov.au)

Membership Fees are due on the 1<sup>st</sup> July each year. After a lapse of 3 months, the member will be deemed un-financial.

Full.....\$60.00

Associate.....\$60.00

Corporate.....\$100.00

I am a ..... Member